

# Marathon everRun® DR

## Real-Time Data Protection- Fast Data Recovery

### Remote disaster recovery solution protects data and applications across any distance

#### REAL TIME DATA REPLICATION

Data is replicated to the remote site continuously to optimize recovery point objective (RPO).

#### AUTOMATED FAILOVER/FAILBACK FOR KEY APPLICATIONS

Application aware solutions for Exchange, SQL, Oracle, Sharepoint and Blackberry automatically restore critical business operations within minutes.

#### ROBUST ARCHITECTURE

Offloaded host processing and streamlined data replication based on block-level differences and real time data changes provide unmatched scalability and performance.

#### STORAGE INDEPENDENCE

Supports replication between heterogeneous storage devices and storage networks for maximum flexibility.

#### WAN RESILIENCY

Replication over any distance using sophisticated compression, coalescing, and de-duplication techniques for efficient use of bandwidth.

#### CENTRALIZED MANAGEMENT AND REPORTING

Web-based management interface accessible from anywhere provides centralized management and control.

#### LONG DISTANCE PROTECTION FOR APPLICATIONS AND DATA

Marathon's everRun DR is a robust and flexible remote disaster recovery solution providing automated and reliable long-distance protection for critical data and applications. Increasingly, organizations are relying on business applications to be operational at all times and disruptions can prove costly in terms of productivity and financial losses. Whether you are concerned about email, key business applications, databases, or file system data, everRun DR provides high-performance remote data protection and automated application failover/failback to ensure business continuity in the event of site disruptions of any kind.

everRun DR adds long distance disaster recovery capabilities to the local and near distance fault-tolerant protection provided by the everRun availability products along with the SplitSite option. everRun DR can be combined with everRun CDP to provide both long distance disaster recovery and local data protection. See the everRun CDP datasheet for details.

Marathon has raised the bar in enabling not just point in time restoration but also event-based restorations. everRun DR allows organizations to tag "event" bookmarks and use them for fast recovery and failover point selection. Unlike other vendors who simply time-stamp each block to enable restoration to a given point of time, everRun DR actually understands the application state allowing for application consistent restorations. This critical difference allows organizations to restore back to a given event or a given point in time and be assured that the application will come up correctly.

## WORLDWIDE HEADQUARTERS

Marathon Technologies Corporation  
295 Foster Street, Littleton, MA 01460  
Tel 1.800.884.6425/1.978.489.1100  
Fax 1.978.489.1101  
Email: [info@marathontechnologies.com](mailto:info@marathontechnologies.com)  
Web: [www.marathontechnologies.com](http://www.marathontechnologies.com)

## EMEA HEADQUARTERS

Marathon Technologies UK Ltd  
Regus House, Trinity Court  
Wokingham Road, Bracknell  
Berkshire, RG42 1PL  
Tel +44 (0) 1344.706.241  
Fax +44 (0) 1344.706.242  
Email: [emea@marathontechnologies.com](mailto:emea@marathontechnologies.com)  
Web: [www.marathontechnologies.com](http://www.marathontechnologies.com)

## everRun DR IN ACTION – HOW IT WORKS

everRun DR is designed for efficient, highly-scalable data protection in the most demanding environments. everRun DR agents reside on the host application servers and/or database servers and enable volume-level continuous data protection and scheduled file-level protection respectively. Each lightweight agent installs seamlessly and occupies a very small footprint on the host. The agents streamline the data replication process by only moving block-level differences based on real time data changes. Furthermore, unlike many storage vendor approaches, everRun DR works in virtually any heterogeneous storage environment resulting in dramatic cost savings.

everRun CX is the Control Server that provides centralized management and host offload of CPU-intensive operations necessary for efficient data protection. It also includes the everRun Analyzer to help IT staff accurately analyze and provision secondary storage and bandwidth. The diagram below depicts a typical everRun DR deployment. everRun CX employs various bandwidth optimization techniques to limit the impact on scarce network resources.

everRun Analyzer enables trending capabilities including the ability to graphically display collected data including data change amounts, effective compression ratios and bandwidth usage on a daily, monthly or yearly basis by individual volume or cumulatively for all replicated volumes. Analysis capabilities can compute bandwidth requirements for a specified recovery point objective for a single or group of replication pairs.

everRun DR is compatible with industry-leading virtualization solutions. Data replication and recovery can operate between two virtual machines, or between virtual and physical machines giving users total configuration flexibility.

## ADDITIONAL everRun DR HIGHLIGHTS

Support for Virtual Servers – everRun DR can protect virtual server environments as well as replicate data to target virtual server environments enabling cost effective server consolidation.

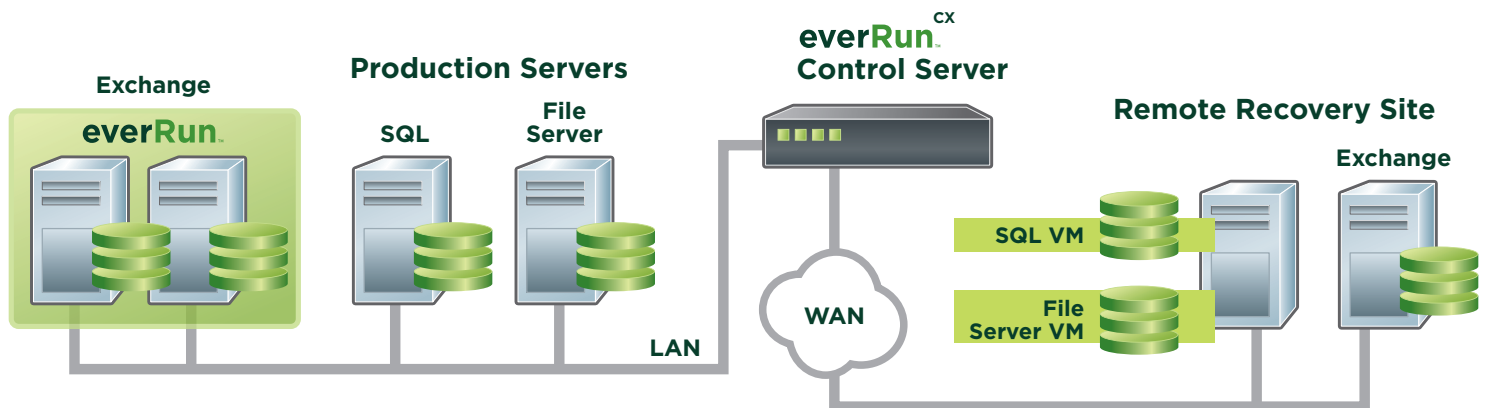
Comprehensive management tools include reporting and profiling with “if/then” capabilities.

Patented point-in-time bookmarking technology for achieving improved Recovery Point and Recovery Time Objectives.

## THE BOTTOM LINE

The everRun DR product suite brings business continuity to a whole new level. Organizations can feel confident that their core business applications and data will have unparalleled availability with the industry leading DR solution. In addition to providing one of the most flexible DR architectures available, everRun DR offers an extensive suite of application aware solutions supporting Exchange, SQL Server, Oracle, Sharepoint and Blackberry. When it comes to disaster recovery, everRun DR offers a robust, flexible and cost-effective solution that is easy to configure and manage.

## Remote Disaster Recovery



The Marathon logo, SplitSite and Marathon everRun are trademarks or registered trademarks of Marathon Technologies Corporation. Microsoft and Windows are registered trademarks of Microsoft Corporation. All other trademarks and registered trademarks are the property of their respective owners. Copyright © 2008 Marathon Technologies Corporation. All rights reserved. Marathon Technologies Corporation reserves the right to make improvements to this document at any time and without further notice. Marathon Technologies Corporation assumes no responsibility for any errors that may appear in this document.