



## Marathon everRun® 2G The Next Generation in Windows Application Availability

Create a resilient application environment with everRun 2G

You don't have unlimited IT resources – but there's no end to the need for application availability. Let everRun 2G take care of this endless demand for you, automatically preventing downtime and data loss for your Windows applications.

everRun 2G is the next generation of Marathon's innovative application availability software. From email to electronic records, factory floor to trading floor, 911 call centers to the emergency room, companies around the globe use everRun to keep their applications running without downtime.

Marathon's innovative everRun technology *prevents* downtime with transparent redundancy, real-time validation and automated synchronization and repair.

You don't need a team of experts or a big budget to benefit from everRun's innovative availability technology. With automated operations and proactive outage prevention, everRun works well in IT-constrained environments, even in branch and remote offices that don't have any local IT.

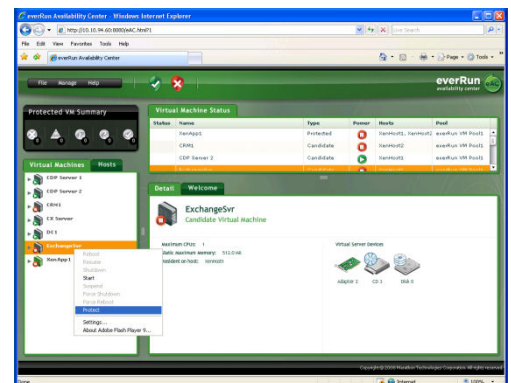
### BE PROACTIVE – PREVENT DOWNTIME!

Avoid complex recovery processes by preventing downtime from occurring in the first place. everRun 2G creates a unified availability environment that

proactively prevents application downtime, with redundancy spanning servers, storage and networks. Real-time validation and automated I/O redirection keep your applications running even through component or system-wide failures

### NEVER LOSE ESSENTIAL DATA

If you have applications that cannot lose a byte of data, then you need everRun. It automatically mirrors application data to create a consistent, identical version that can be separated physically from the original. Data remains available even if a disk device, network or entire server fails.



## WORLDWIDE HEADQUARTERS

**Marathon Technologies Corporation**  
295 Foster Street, Littleton, MA 01460  
Tel 1.800.884.6425 / 1.978.489.1100  
Fax 1.978.489.1101  
Email: [info@marathontechnologies.com](mailto:info@marathontechnologies.com)  
Web: [www.marathontechnologies.com](http://www.marathontechnologies.com)

## EMEA HEADQUARTERS

**Marathon Technologies UK Ltd**  
Regus House, Trinity Court  
Wokingham Road, Bracknell  
Berkshire, RG42 1PL  
Tel +44(0) 1344.706.241  
Fax +44(0) 1344.706.242  
Email: [emea@marathontechnologies.com](mailto:emea@marathontechnologies.com)  
Web: [www.marathontechnologies.com](http://www.marathontechnologies.com)

## A SINGLE, RESILIENT PLATFORM FOR WINDOWS APPLICATIONS

Don't waste time and money on point solutions for availability. everRun 2G delivers a single, resilient application environment that encompasses:

- Storage, networks, systems, *and* data
- Single and multiple (virtualized) workloads

everRun 2G runs your applications without modification, and works with off-the-shelf hardware and software, including:

- Windows Server 2008 or Windows Server 2003 (64- and 32-bit)
- Standard x86 servers
- Local disk, shared-disk or SAN

## SIMPLIFY YOUR IT ENVIRONMENT

everRun 2G takes over the process of monitoring and responding to failures for critical applications, delivering superior service levels with less IT intervention. It alerts you when it detects potential problems that could lead to future faults. Otherwise, it practically runs itself, which is why it is so successful in branch and remote offices, and in disaster recovery sites without IT personnel on hand.

## ENJOY PEACE OF MIND

At Marathon, we know that some applications are more important than others, but most need *some* level of protection from downtime. everRun 2G supports multiple availability levels, from basic dis-

aster recovery to component-level fault tolerance and full system-level fault tolerance for applications with the most stringent needs. You can assign and manage them from the same interface. With everRun automatically enforcing the right availability levels across all of your Windows applications, you can get a little peace of mind.

## ADD DISASTER RESILIENCE, EASILY

Add everRun 2G SplitSite® to stretch your resilient application environment across wide distances, so that a site-wide problem or outage won't bring your applications down.

